



# Old Steller Yeller

February 2013

Dear Parents and Guardians,

I hope this finds you well. It seems like yesterday, we were all on Winter Break. Now, as I look at the calendar, we are almost half way through our third quarter of school! This month, we have a lot going on, so pay attention to the Activities Calendar. Some of those things include the Talent Show on February 1st, Terranova testing for our 7<sup>th</sup> grade students is on the 5<sup>th</sup> of February, the Ice Cream Social for perspective students on the 7<sup>th</sup>, a dance on the 8<sup>th</sup>, and the Alternative Fair on the 9<sup>th</sup>. On top of all that, there is no school on the 15<sup>th</sup> or the 18<sup>th</sup> of February.

We have now had two All Community Meetings this year, and many ideas of how to make our school a better place have come from them. I am always amazed at how concerned and dedicated our parents are. I thank all of you who came to the meetings and had input, both positive and negative. It's important to see where we are and aren't doing well. Our next All Community Meeting will take place on the 20<sup>th</sup> of March. This next one will celebrate the accomplishments of our students and promises to be all positive. I hope to see you all there.

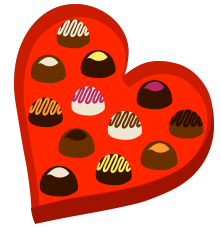
Our SBA's and our HSGQE's are also coming up on March 28<sup>th</sup> and April 2<sup>nd</sup> through the 4<sup>th</sup>. All 8<sup>th</sup>, 9<sup>th</sup> and 10<sup>th</sup> graders and anyone in 11<sup>th</sup> and 12<sup>th</sup> grade that hasn't previously passed the exam will be taking it. The best you can do for your student or students is to make sure they have been fed breakfast and are well-rested from the night before. I wish them all the best of luck. Steller has an excellent reputation of achieving high test scores, and I believe we will continue the tradition.

Lastly, I would like to remind all of you how important it is to be involved in your students' lives. Those of you who are, know how time consuming and valuable it is. I would love to see you come to a parent or advisory board meeting. The year is short, so take advantage of being in our building when you can. I appreciate all of you who make a difference in your child's life. Don't forget to take care of yourselves as well. Healthy parents promote healthy students. Keep it up!



**From the Principal  
Dale Evern  
742-4964**

# Staff Corner



The staff is currently considering changes to next year's activity calendar, particularly the number of and timing for meetings. Last semester, a number of parents indicated that they thought we held too many meetings, especially near the beginning of the year, which contributed to lower attendance. This semester, we have heard similar sentiments and are seeking a way that we can continue to maintain our school's democratic nature and to foster a sense of community, without creating meeting burn-out.

One possible change is to move the first All-Community Meeting to October so that fall isn't overbooked with the back-to-school night BBQ and new-to-Steller orientation. In months that we have an All-Community Meeting, we would not hold an Advisory Board meeting unless a pressing issue and vote called for it. In that case, the Ad-Board vote would be held at the close of the All-Community Meeting. Another thought is that two All-Community Meetings per year would suffice and could likely lead to higher attendance.

The staff is planning the next All-Community Meeting, which is scheduled for March 20<sup>th</sup>. We will follow-up on some of the goals and action items from the first two ACMs and will use this time to feature some of the awesome accomplishments of our students, ranging from the Passages program to community service. We would also like to have a professional offer a grant writing workshop during one of the sessions.

If you have suggestions, please email your student's advisor.





## Nurse's Notes



Parents,

The following information comes from School Health Alert, vol. 28, no. 3, November 2012. I don't think this is a surprise to anyone, but it's important to read again. To help your adolescents avoid substance abuse you need to be cognizant not only on their behavior, but their friend's and their friend's parent's behavior as well.

### **Advise Children to Choose Friends with Great Parents**

It's been known for years that one's own parents are a key figure during adolescence. Another well-known major influence on adolescents is the set of friends they make. Together, a youth's parents and his/her peers predict the likelihood of cigarette use, obesity, and even some infectious diseases. This journal investigated whether adolescents' chances for substance abuse are also affected by the quality of parenting received by friends they "hang" with.

Drawing on conceptions of shared parenting and the tenets of "coercion theory", this team investigated the extent to which three domains of parenting (parental knowledge, inductive reasoning, and consistent discipline) influenced use of alcohol, cigarette, and marijuana on parents' own adolescents as well as on members of their adolescents' friendship groups.

Two sequential years of 9th grade students in 28 rural community schools of Iowa and Pennsylvania (N=7439) were used to identify 897 friendship groups. Friendship groups are discovered by asking adolescents to identify their friends. And then those friends are independently asked to do the same. Three domains of parenting were assessed: knowledge and monitoring of their children's whereabouts, use of inductive reasoning, and use of inconsistent discipline strategies. Adolescent substance abuse was measured with four questionnaire items (How many times this winter have you: Had beer, wine, coolers or other liquor? Been drunk? Smoked cigarettes? Smoked marijuana?).

It was found that adolescents' substance abuse in 10<sup>th</sup> grade was significantly related to the parenting behaviors of their friends' parents. This was true at the 9th grade level, even after controlling for the substance abuse of the parents' own adolescents, and the parents own behaviors. The conclusion is that parenting style in adolescents' friends' homes plays an important role in determining adolescent substance use. (Cleveland MJ, et al. J Stud Alcohol Drugs 2012; 73:423-433.)

Comment: This is true among rural, white teens in 9th/10th grades. The authors point out that they do not know if this will generalize to urban, non-white adolescents of other age groups.

## Parent support needed at Steller Library during Lunchtime

The **Steller Library** is a great place to spend your lunch – and a lot of students think so too! Let us know if you would like to help out from 11:30-1:00 on either Tuesdays or Thursdays in the library. Students love to use it for studying and research over lunch, but we can only offer that if we can keep it open – and we need parents to help us accomplish that! Email Steller's library aide, Becky, at [gurney\\_rebecca@asdk12.org](mailto:gurney_rebecca@asdk12.org) or call me at 244-8829. You can choose to volunteer either once a week or once every two weeks.

Thanks for your support!



## Attendance Procedure Reminder

**Please report your students absence** to the Steller office or attendance line **within 24 hours of the absence.** Anything more than 24 hours will not be corrected.

All students are **REQUIRED** to sign in if they are late in the morning and **SIGN OUT** if they are leaving during the school day for the safety of every student in the event of an emergency. Also if students leave for an appointment during the day and return they need to make sure that they **SIGN BACK IN.**

If your student has been marked tardy or absent and you feel that it is in error please contact the teacher directly through email as the office is unable to make any corrections without confirmation from the teacher.

### **If you do receive an attendance phone call:**

Press 1 before you hang up or listen to the complete message so you will not receive multiple phone calls.

## February Schedule Reminder!

Steller will have full school days during the district's 3rd quarter conferences on February 13th and 14th. (There will not be school on the 15th, which is an in-service day.) Instead, end-of-the-year conferences will be held May 20th and 21st.

The feedback from parents, students and teachers has been overwhelmingly in favor of returning to end-of-the-conferences in place of 3rd quarter conferences. Having conference time in May allows for reflection on the entire school year and offers a good time for goal-setting for the summer and following school year. We will continue to do student-led conferences after first quarter in the coming years.

## **Upcoming SBA, SBA/HSGQE, and HSGQE Assessment Information**

**The SBA, SBA/HSGQE, and HSGQE Assessment will be  
Tuesday April 2, Wednesday, April 3 and Thursday April 4<sup>th</sup>.**

There is HSGQE help at:

<http://www.asdk12.org/ae/assessments/hsgqe/>

In case any of your students would want / benefit from additional help beyond that there are  
SBA, SBA/HSGQE, and HSGQE practice materials at: ,materials at:

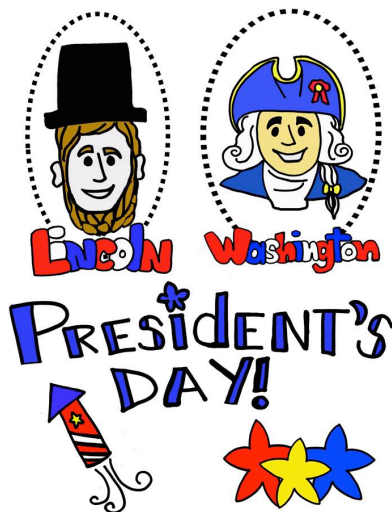
[http://education.alaska.gov/tls/assessment/  
SBA\\_PracticeTests.html](http://education.alaska.gov/tls/assessment/SBA_PracticeTests.html)

Overall SBA and HSGQE information is at:

<http://education.alaska.gov/tls/assessment/hsgqe.html>

If you have any questions let me know,

John



**Monday, February 18th -  
Presidents Day Holiday**

**All ASD schools and offices  
closed.**



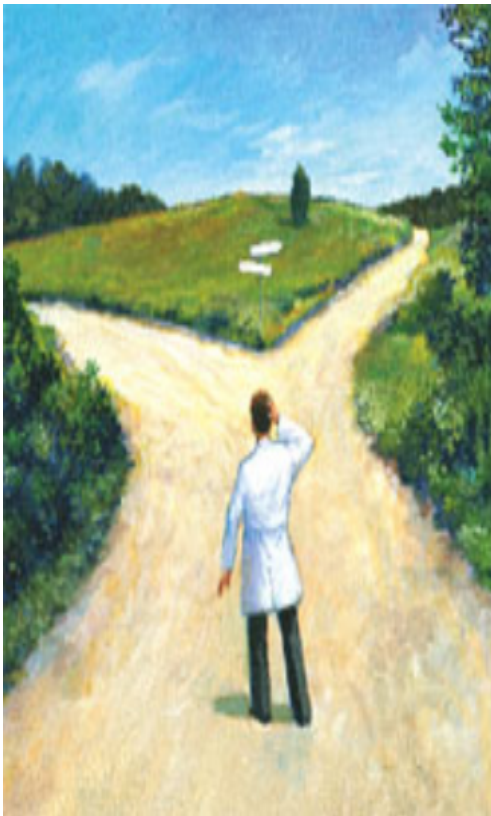
# College & Career Information and Planning

Tuesday, February 12th  
6:30 – 8:00 in the New Computer Lab

## “FAFSA”

### **Free Application for Federal Student Aid**

This is required for the Alaska Performance Scholarship, Student Loans,  
and almost any money a student may receive to pay for college.



*Get the help you want to fill out  
your FAFSA.*

Bring your questions  
Bring your forms  
Plan on getting things done!

Presented by:  
Coner Williamson  
Alaska Commission of  
Postsecondary Education

If you have any questions please feel free to contact John



## University of Alaska Statewide Scholarships

Please visit UAOnline for a complete list of scholarship, scholarship details, to apply and to submit any additional information:

<http://uaonline.alaska.edu>

[http://www.alaska.edu/foundation/donor\\_relations/scholarships/](http://www.alaska.edu/foundation/donor_relations/scholarships/)

[http://www.alaska.edu/foundation/donor\\_relations/scholarships/scholarship-list/](http://www.alaska.edu/foundation/donor_relations/scholarships/scholarship-list/)

Alaska Aerospace Development Corporation Scholarship - Minimum award \$5000

Alaska McDonald's Student Scholarship - Minimum award \$2,500

Alaska Native Medical Center Auxiliary Scholarship - Minimum award \$1,000

Alaska Press Club Scholarship - Minimum award \$500

Alaska Support Industry Alliance Scholarship - Minimum award \$500

Alaska Visitors Association/ Gomar Scholarship - Minimum award \$500

Alaska Yukon Pioneers Memorial Scholarship - Minimum award \$1,000

Amos Joe Alter ASCE Section Alaska Section Scholarship - Minimum award \$1,000

Mike Ardaw Scholarship - Minimum award \$1,000

Lawrence Bayer Business Administration Scholarship - Minimum award \$500

Charles E. Behlke Engineering Memorial Scholarship - Minimum award \$1,000

Bill & Nell Biggs Scholarship - Minimum award \$500

Bolick Foreign Student Scholarship - Minimum award \$1,000

Charles E. Bunnell Scholarship - Minimum award \$1,000

Loyal D. Burkett Memorial Scholarship - Minimum award \$500

Lyle Carlson Wildlife Management Scholarship - Minimum award \$500

Chenega Corporation Scholarship - Minimum award \$500

Ella Craig/ NASW Alaska Chapter Scholarship - Minimum award \$500

Mable B. Crawford Memorial Scholarship - Minimum award \$500

Richard C. & Minnie Crook Scholarship - Minimum award \$2,500

Dental Education - Minimum award \$1,000

Ed Earnhart Political Science Scholarship - Minimum award \$500

Excellence in Geographic Information Systems Scholarship - Minimum award \$500

Lydia Fohn-Hansen/ Lola Hill Memorial Scholarship - Minimum award \$1,000

Johnny & Sarah Frank Scholarship - Minimum award \$500

Charles F. Gould Endowment Scholarship - Minimum award \$1,000

Patty Hamilton Early Childhood Development Scholarship - Minimum award \$2,500

George Happ BioMedical Sciences Scholarship - Minimum award \$1,000

# The “Lingo” of Financial Aid

**FAFSA, net price, priority date** — you’ll come across some unfamiliar terms as you start looking into and applying for financial aid.

**Here’s a glossary to help you make sense of it all.**

## **Award Letter**

The document from a college that explains terms of financial aid the college is offering you. The information includes the types and amounts of financial aid offered, what you’re expected to do to keep the award and a deadline for accepting the award.

## **Bursar**

The college official responsible for handling billing and payments for tuition, fees, housing and other related expenses.

## **College Credit**

When a college grants credit for a course, it means that passing that course counts toward a degree. Colleges may also grant degree credit for scores on exams.

## **Cost of Attendance (COA)**

The total amount of college expenses before financial aid. Cost of attendance includes money spent on tuition and fees, room and board, books and supplies, and living expenses.

## **CSS/Financial Aid PROFILE®**

[CSS/Financial Aid PROFILE](#)

A financial aid application used by more than 400 colleges, universities and private scholarship programs to award their financial aid funds. The College Board offers this service. Read more about the.

## **Demonstrated Need**

The difference between your expected family contribution (EFC) and the total cost of attendance for a particular college.

## **Expected Family Contribution (EFC)**

[Read about the EFC.](#)

A measure of your family’s financial strength. States and colleges use this number to help determine your financial aid award. The EFC is calculated using information you supply about your family’s financial circumstances.

## **Financial Aid**

[Learn about financial aid options.](#)

Money given or loaned to you to help pay for college. Financial aid can come from federal and state governments, colleges, and private and social organizations.

## **Financial Aid Office**

A college office that serves as a resource for students who need help paying for college costs. Financial aid officers can help you to apply for and receive grants, loans, scholarships and work-study employment.

## **Financial Aid Officer (FAO)**

College employees trained to help students and families apply for and receive grants, loans, scholarships and work-study employment. They can answer questions about ways to make college more affordable.

## **529 Savings Plans**

State-sponsored investment plans — officially: qualified tuition programs (QTP) — to help families save money for college. The plans have tax benefits so savings grow faster. The money in the accounts can be used only for education expenses.

## **Free Application for Federal Student Aid (FAFSA)**

[Read more about the FAFSA.](#)

The free application form you submit to apply for federal financial aid. It’s required for all students seeking federal student grants, work-study, and loans and likely to qualify you for state-sponsored financial aid. Most colleges require it as well.

## **Grant**

[Learn more about gift aid](#)

Called "gift aid" — financial aid that doesn’t you don’t pay back, usually awarded based on need.

## **Loan**

[Your College Loan Options](#)

Money you borrow from the government, a bank or another source. You have to pay back over an agreed period of time. There will be interest on a loan & an origination fee for borrowing the money. Learn about.



**Merit Aid**

Financial aid given to students based on their personal achievements. Most scholarships are considered merit aid, as they are generally awarded for success in school, the arts, athletics or another area.

**Need-Based Financial Aid**

Financial aid (scholarships, grants, loans and work-study opportunities) given to students because they and their families are not able to pay the full cost of attending a certain college. This is the most common type of financial aid.

**Need-Blind Admission**

A policy of making college admission decisions without looking at applicants' financial circumstances. Colleges that use this policy may not offer enough financial aid to meet a student's full need.

**Net Price**

The full cost of attendance at a college minus the amount of gift aid a student receives. This is the true amount of money a student will pay to attend a college.

**Net Price Calculator (NPC)**

An online tool that gives you a personalized estimate of what it will cost to attend a specific college. Most colleges are required by law to post a net price calculator on their websites.

**Outside Scholarship**

Also called "private scholarship." A scholarship offered by a private organization — not the government or a college. Outside scholarships are offered by all kinds of groups, individuals, corporations and nonprofit organizations.

**Priority Date**

The date your application — whether it's for college admission, student housing or financial aid — must be received to be given the strongest consideration. Since financial aid is limited, meeting the priority date is mandatory to be eligible for funds.

**Reserve Officers' Training Corps (ROTC)**

A program offered by the military and available at some colleges. ROTC offers scholarships to students who agree to serve in the military after they graduate. Some ROTC four-year scholarships cover full tuition and fees. The program combines a military education along with college study leading to a bachelor's degree.

**Residency Requirements**

The amount of time a student has to live in a state before he or she is eligible for in-state tuition prices and state aid.

**Scholarship**

Another "gift aid" — doesn't need to be paid back. Scholarships may be awarded based on merit or partially on merit. That means they're given to students with certain qualities, such as proven academic or athletic ability. Learn more about gift aid

**Student Aid Report (SAR)**

The report sent to your family after you submit the Free Application for Federal Student Aid (FAFSA) that tells you what your expected family contribution (EFC) is.

**Transcript**

The official record of your course work at a school or college. Your high school transcript is usually required as part of your college application and for some financial aid packages.

**Undergraduate**

A college student working toward an associate degree or a bachelor's degree.

**Work-Study - Federal Work Study (FWS)**

A program that allows students to take a part-time campus job as part of their financial aid package. To qualify for the Federal Work-Study Program, which is funded by the government, you must complete the Free Application for Federal Student Aid (FAFSA). Some colleges have their own work-study programs.

# Types of Financial Aid Programs for Alaskan Students

Financial aid isn't as daunting as it may seem...like anything it takes time and diligence. Think of it as gold mining: do your research to pin point where to explore, organize your resources and start the process.

Remember, to apply for almost any kind of aid you will need to submit a Free Application for Federal Student Aid (FAFSA) for each and every year you are requesting aid.

Where do I start looking?

[Alaska Performance Scholarship](#)

[Alaska Advantage](#)

[Alaska Community Foundation](#)

[University of Alaska Statewide Scholarships](#) (PDF)

What can I expect to find?

- ❖ Grants are the ultimate graduation gift, because you don't have to pay it back.
- ❖ Pell Grants (federal aid) awarded to low-income students
  - Federal Supplemental Educational Opportunity Grants (SEOG) are for low-income students with exceptional financial need.
- ❖ State Grants (state aid) are free money guaranteed to every high school senior that applies on time and meets income, eligibility and GPA requirements.
- ❖ Federal Work-Study - part time job program on the school campus where you will earn money to help pay for your education and may give you valuable work experience towards your career.
- ❖ Merit Scholarships, again, free money for college based on your area of study or merit, such as good grades, high test scores, athletic, musical or other special talents, community service , etc.
- ❖ Need Based Scholarships, more free money except administered based on financial need.
- ❖ Loans are exactly that, money you borrow and have to pay back...definitely not free money.
  - Federal Loans are low-interest loans that come in all shapes and sizes.
  - Perkins Loans are administered by the college and are for students with exceptional financial need.
  - Subsidized Stafford Loans are for students who meet financial requirements and are attending school at least half-time. With this loan, the government pays the interest from when you get the loan money until up to six months after you leave school. An unsubsidized Stafford Loan is available to any student regardless of financial need, but the student pays the interest.
  - PLUS Loans are available for the parents of students attending college.

After you have exhausted all those possibilities,  
although a lot harder, there is always the panning option.  
As always, if you have any questions John is in his office.

# **Upcoming Terra Nova Assessment**

**7th Grade Tuesday, February 5th 7:30AM  
in the MPR**

## **TerraNova Newsletter Information Elementary and Middle Schools**

The TerraNova is a norm-referenced standardized achievement test that is part of the Alaska Comprehensive System of Student Achievement (CSSA). The state requires school districts to test students in grades 5 and 7. These grades will also participate in the statewide administration of the Standards Based Assessment in April.

The TerraNova will be administered to students in grades 5 and 7 on February 5-6, 2013. Schools can schedule make-up testing for TerraNova on February 7-8, 2013.

The required sub-tests are timed and include reading, language, and mathematics. The TerraNova individual student results are reported in national percentile scores. A student's achievement is compared with that of the national sample of students upon which the test was normed. By administering a norm-referenced test, we are able to gauge how our students in the Anchorage School District perform compared to students who were in the national norm group.

Each individual school will set their daily testing and make-up schedules. The combined length of the tests is 165 minutes with additional time required for test distribution and reading of directions.

Parents are asked to help by having their students rested and ready for testing on the testing days. Eating a nutritious breakfast is important. Please have your student to school on time and avoid scheduling appointments on the testing dates.

Parents/guardians are reminded to update addresses as testing approaches. ASD has a large portion of test results returned to A&E and never claimed, accounting for a large amount of money and human resource time. Thank you in advance for support with keeping current and correct addresses on file with ASD.



**Anchorage  
School  
District**

## **ASD Announcements**

### **Teacher and Administrator Evaluations**

State regulations require that students, parents, community members and school staff are given the opportunity to provide information about teacher and administrator performance. These regulations regarding certificated employees do not require such an opportunity for positions not requiring a certificate.

The two forms currently available are the Evaluation Input Form on Teachers and the Evaluation Input Form on Administrators (whether they are site administrators or central office administrators).

If you would like to complete an Evaluation Input Form you have three options:

- Employees can complete the web based EIF anonymously by going to the District Connection at <http://home.asdk12.org>. You will find links to either EIF (Teacher or Administrator) under the special announcements section.
- Members of the public and employees not wishing to remain anonymous can complete a web-based Evaluation Input Form by going to the ASD online Parents & Students page link at <http://www.asdk12.org/parents/index.html> in the Feedback and Questions box. Links to both Evaluation Input Forms are available.
- School sites will also have “hard copies” of the form for parents and employees who do not have access to a computer. Each school will determine a location for the form (most likely main office). Hard copies will be kept confidential and routed by the school to the immediate supervisor.

Web-based Evaluation Input Forms will be transmitted electronically by the Human Resources Department (Sarah Hotchkiss Flanagan, Web Programs Specialist) to the appropriate supervisor.

The Evaluation Input Forms are now available on the website and will remain posted in their web locations through May 1, 2013.

#### **Anchorage School Board**

Jeannie Mackie, president

Tam Agosti-Gisler

Gretchen Guess

Pat Higgins

Natasha Von-Imhof

Kathleen Plunkett

Don Smith

#### **ASD Superintendent**

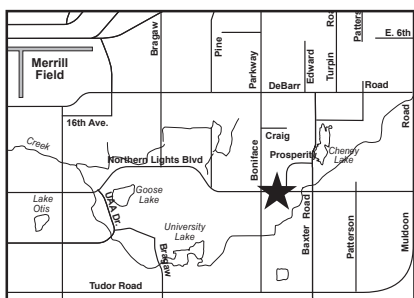
Jim Browder Ed.D.





**Saturday, February 9, 2013**  
**10 a.m. – 3 p.m.**

**Anchorage Schools**  
 ASD Education Center  
 5530 E. Northern Lights. Blvd.



**Lottery paperwork due to school:**  
**Thursday, March 21, 2013**

**Spring lottery date:**  
**Friday March 22, 2013**

**17th Annual**  
**K-12 Alternative Programs Fair**  
**Saturday, February 9, 2013**  
**10 a.m. – 3 p.m.**

Please join us and learn about alternative programs in the Anchorage School District. Program staff and parents will be available to answer questions and assist you in filling out lottery forms for the 2013-14 school year.

Anchorage-area alternative and charter schools will be represented at the ASD Education Center. Participating schools include language immersion, ABC Back to Basics, Open Optional, School-Within-A-School, Montessori, Multi-Sensory Instruction and charter schools.

**ASD Alternative Schools and Programs**

Students have varying needs and some learn better in an environment different from that at a standard elementary, middle or high school.

As in neighborhood schools, students in alternative schools and programs attend classes and other activities throughout their school day. While the instructional methods used can vary, high standards are established and maintained regardless of the school structure or philosophy.

Students, parents, counselors or teachers may suggest one program or another, depending on student need and ability. Each program has its own admission requirements. Parents are responsible for providing transportation to alternative programs that are not at their neighborhood schools.

The school district will utilize an online lottery system to provide an equal opportunity for students who request participation in an alternative program or school for which the number of applications exceeds the number of available openings. Approval or denial is based on space availability and grade level and gender balance. Lotteries are held two times each year.



# UPCOMING EVENTS

## Friday, Feb. 1st

Talent Show & Dessert Night  
7:00-9:00pm

## Friday, Feb. 8th

February Dance  
7:00-11:00pm



## Tuesday, Feb. 5th

College and Career Night  
6:30-8:00pm

## Saturday, Feb. 9th

ACT Testing

## Wednesday, Feb. 6th

Parent Group Meeting  
6:00-7:30pm

## Thursday, Feb. 14th

AD Board Meeting  
6:30-8:00pm

## Thursday, Feb. 7th

Open House and Ice Cream Social  
6:30-8:00pm

## Friday, Feb. 15th

In-Service Day - No School

## Monday, Feb. 18th

President's Day - No School



Anchorage School Business Partnerships  
5530 E. Northern Lights Blvd.  
Anchorage, AK 99504-3135  
[www.asdk12.org/depts/sbp/](http://www.asdk12.org/depts/sbp/)



Steller Secondary  
can't thank our School Business Partners enough...  
thank you, thank you, thank you.